

# The South Hartford Conveyance and Storage Tunnel

North American Society of Trenchless Technology  
Northeast Trenchless Conference

The Metropolitan District

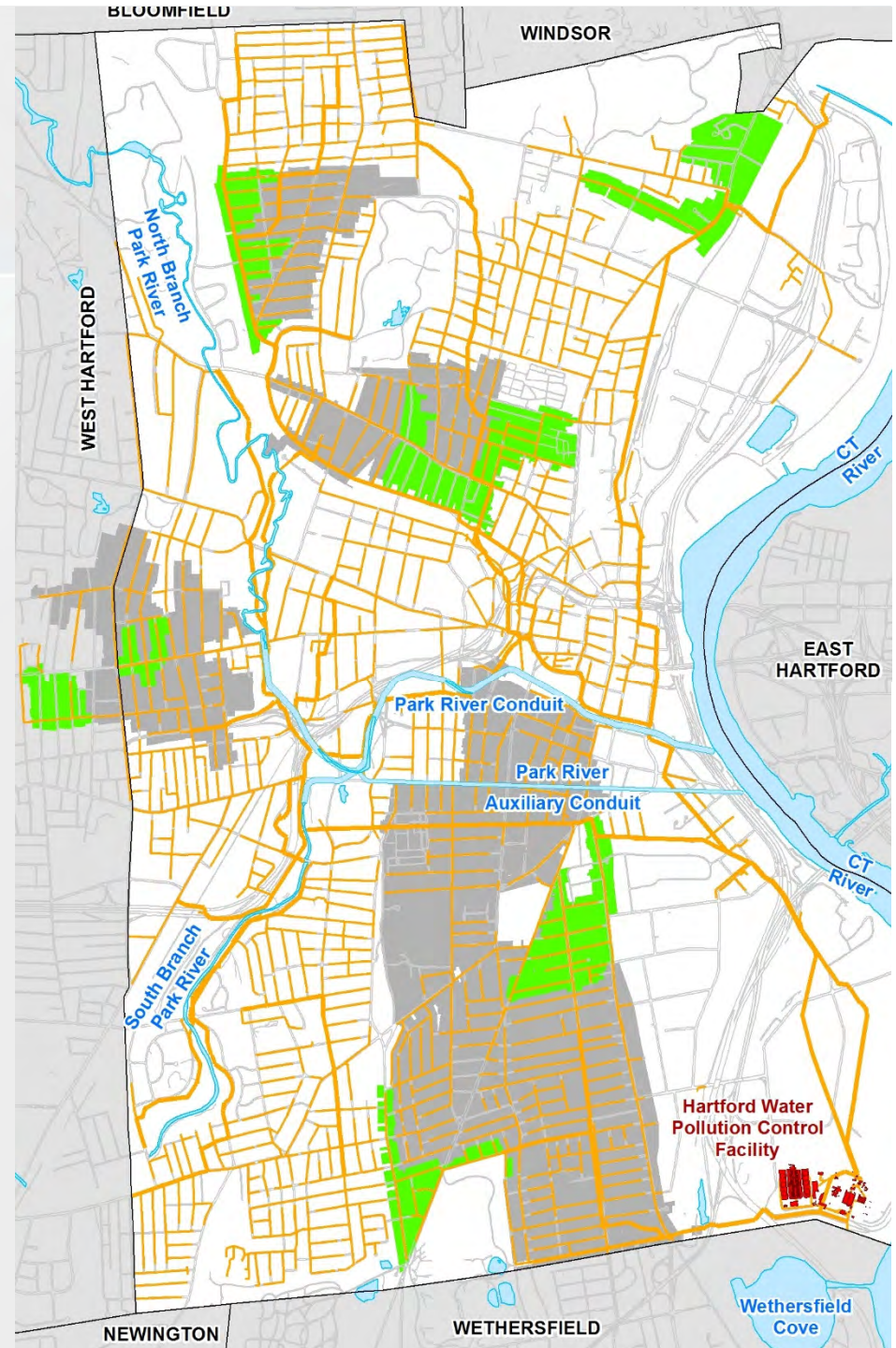


November 13, 2018



# Sewer Separation

- Original vs. Planned CSO Separation Areas
  - 6 areas project wide
  - Separates combined sewers into separate sanitary and storm sewers
  - Total Value \$180M
- Separation costs avoided
  - Franklin Ave area = \$240M
  - Other Areas = \$560M



# Commentary

## Part I: Upper Albany Is Strong! We will not let them turn us into a ghost town.

By: Upper Albany Merchants Association: Gordon Scott, President

Upper Albany is in Jeopardy of becoming a ghost town if we don't open our eyes, stand up, and raise our voices now. In the spring of 2013 the "Clean Water Project" will be opening up the heart of the Upper Albany community, and may destroy it completely. Without an adequate assessment of the risks of disruption, the Managers of this project are gearing-up to stick a shovel in the ground with blinders on. They are coming, and from our perspective, they care neither how we will be affected nor what they leave behind, as long as they get their work done. We have got to make sure that they leave us whole, and that Upper Albany remains strong.

**Albany Avenue** "The Ave" is one of the most important lifelines for the City of Hartford. It is arguably the main artery from the Farmington valley and the western gateway to downtown.

Albany community surrounds and feeds the section of The Ave which starts at Main Street downtown and ends at Scarborough Road. According to city officials Upper Albany possesses the highest level of retail sales in the city, surpassing Franklin Avenue, Maple Avenue, Farmington Avenue, Downtown, Park street, and others. It is a vibrant, community rich with food, arts, culture, healthcare and convenience. The business and residential community of Upper Albany is made up of strong, resilient people, who have over the years weathered recessions, and inflated negative perceptions, while creating a bubbling urban environment, that is always alive, and always moving with over 22,000 cars per day, and foot traffic that may make Blueback Square jealous.

We are strong, but the fight for our lives is here, in progress. Despite its legitimate importance to both the

flooded basements, the Clean Water Project has been implemented in a way that has already ruined many businesses and left others, including our own merchants, licking severe wounds in its aftermath. For the past three years, businesses at the corner of Albany Avenue and Garden Street have been damaged by this project in such a manner that even before the main event next year, they may already be lost.

The Upper Albany Merchants Association has made every effort over the past several years to correct the progress of this deadly portion of the Clean Water project. Our objective all along has been to have a worthy risk assessment made for the purpose of quantifying the costs of disruption to businesses and to the community. It is vital that these probable costs be made a part of the risk assessment and plans should

that minimizes the disruption risk to this vital community and save it from certain death. So far, the approach we have taken of trying to speak to the Project Managers, has not made sufficient impact to give the community adequate protection. As a matter of fact, instead of communication, and progress toward our goals, we have been met with resistance and in some cases retaliation, whenever we put forward the community's concerns and ask for consideration.

**The Main Event:** The Clean Water Project is a colossal project which may end up costing over \$3 billion if it follows its current trajectory. The worthy objective of the Project is to separate sewage and storm water drains in a city that currently only has one aging, singular drainage system carrying both rainwater and sewage together. As the city has grown in population over the hundred years since that system was built, the demand for sewer and storm drainage has

system, so that when the rain falls, the excess volume has ended up in the Connecticut River, sewage and all. No rational person would dispute the worthiness of correcting this problem. However, the methodology should take prospective disruption risks into critical consideration.

The Albany Avenue portion is scheduled to be a relatively small portion of the larger project, yet the significance of the effort to the City's well being makes it a real and risky proposition, given our experience to date. Here is what we know about what is coming to our doorsteps on The Ave. in the spring of 2013:

A 6 foot (diameter) conduit (concrete tunnel) down the middle of Albany Avenue from The YMCA all the way to The University of Hartford's Handel Performing Arts Center. This means we can expect a trench double that size in width (10-12 feet) and 20 to 30 feet

den Street all the way to Scarborough Avenue and will carry only rain water runoff, no sewage.

For each building that collects water from its roofs driveways and parking lots, deep lateral trenches must be cut from that conduit to the buildings. Then, they will lay new pipes for the storm water, and will "disconnect" the old storm water connections from the old pipes, which will now be a sewer only conduit. That means that just about every building on the Ave. will have to deal with a deep ditch running from the center of The Ave to their doorstep.

They will lay a new 4 foot water main, which is usually replaced at a much greater speed than the storm water, because they are shallower (around 5-10 feet deep) but this one is very large and will still cause a tremendous amount of disruption if done during the day.

A new water main, also

again that requires additional lateral trenches to make those connections. Other risks include the fact that there is no record of where all the utilities are hidden under the surface. Over the years, gas lines, electricity, telecom, and even Trolley tracks have been placed (unrecorded) under the surface of The Ave and no one knows what to expect when the shovel goes in. Our experience has been that a broken gas main can set the project back for days. This is what happened on Main Street, where broken water mains, cable lines, and other utilities caused extended delays and disruption on a regular basis.

We cannot afford to wait any longer for the powers that be to move on this. Once contractors are hired and the contracts signed, we will be mere spectators, begging for them to stop. We must make them hear us, and change their approach before it is too late. Join with us now, as we will be making public demonstrations about this in the coming months. We will be posting on Facebook and twitter, so "like" and "follow" us and give us your support.

# Commentary

## Part II

### Garden St. & Albany Ave., today's reality A glimpse at what is coming next

By. Upper Albany Merchants Association: Gordon Scott, President

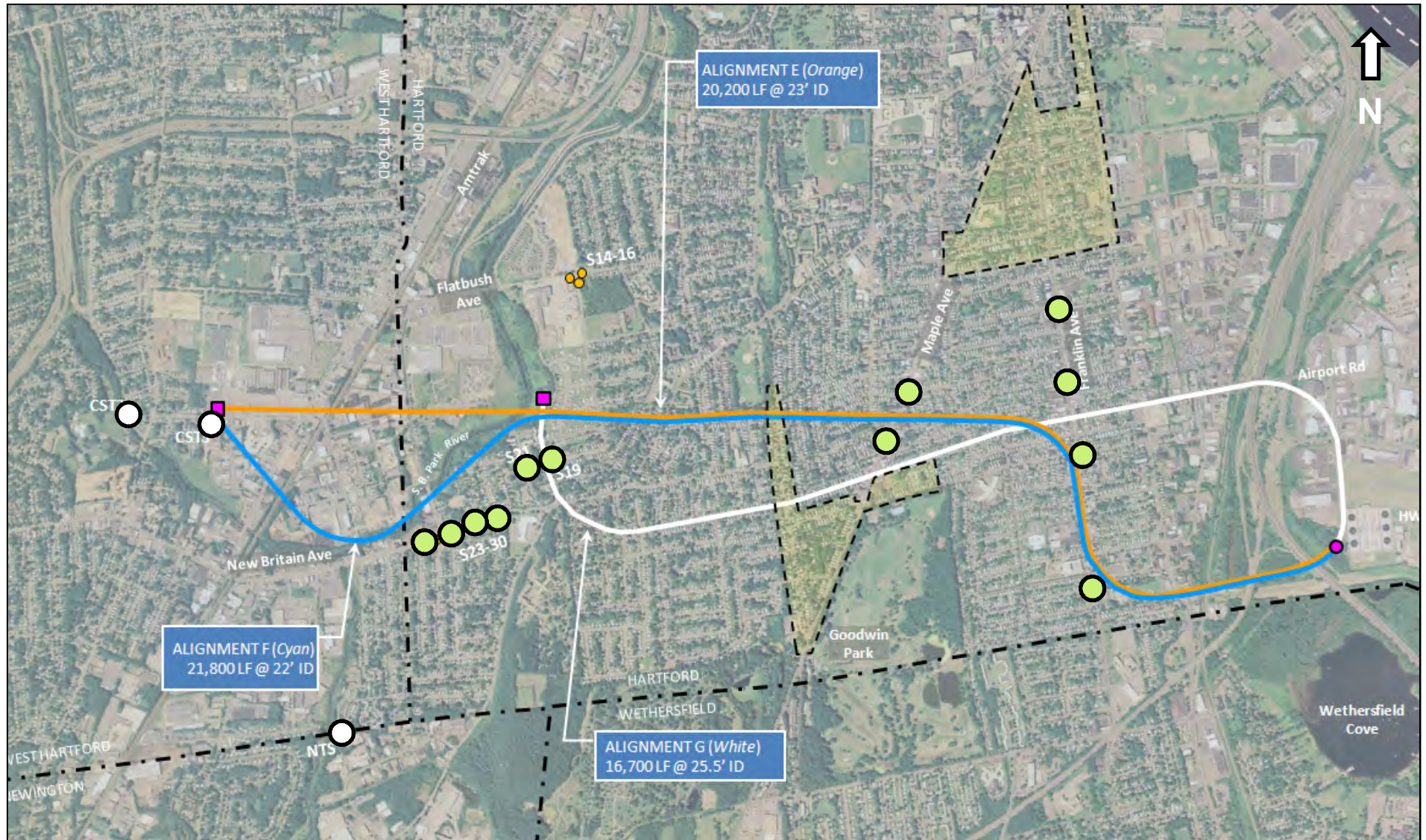
*We ask all readers of this to take a drive down to Seashore Restaurant on the corner of Garden & Albany Avenue in Hartford, and after you buy some lunch, ask Ed Robinson, the owner, how the Clean Water Project has affected him. He will tell you that he has been devastated. "... we've been going through severe hardship since the work started outside". That is a 12 feet wide 30 feet deep crater that has been outside his front door for more than 2 years, blocking traffic, blocking views, and obstructing the free flow of business to which he is accustomed, when the barriers are not there.*

*We are amazed by Ed Robinson's grit when we consider what he has had to endure as a result of the Clean Water Project. We have stopped in, and talked with Mr. Robinson many times, and are bewildered at how, under the circumstances, he and his wife are able to make it through the day to day nightmare that is this project. His customers can't get to him, potential customers can't see his business, and the flow of traffic has often been cut to zero on Garden Street whereby eliminating any potential for business whatsoever. It is the kind of catastrophe that would devour most businesspeople in weeks. We can only pray now that years of this pressure has not done irreversible damage to his business and his family's future, as there has been no effort made by the powers that be, to take the steps, neither to protect nor recompense Seashore Restaurant and others for the damage that this project has directly caused to their businesses. We all must stand up for Ed, and by doing so we stand up for ourselves and the entire community.*



**Caption:** Sea Shore Restaurant, was doing well, but the Clean Water Project parked on its doorstep for almost 3 years and the disruption to its business has been devastating.

# Alignments Evaluated During Early Studies



○ Existing SSO

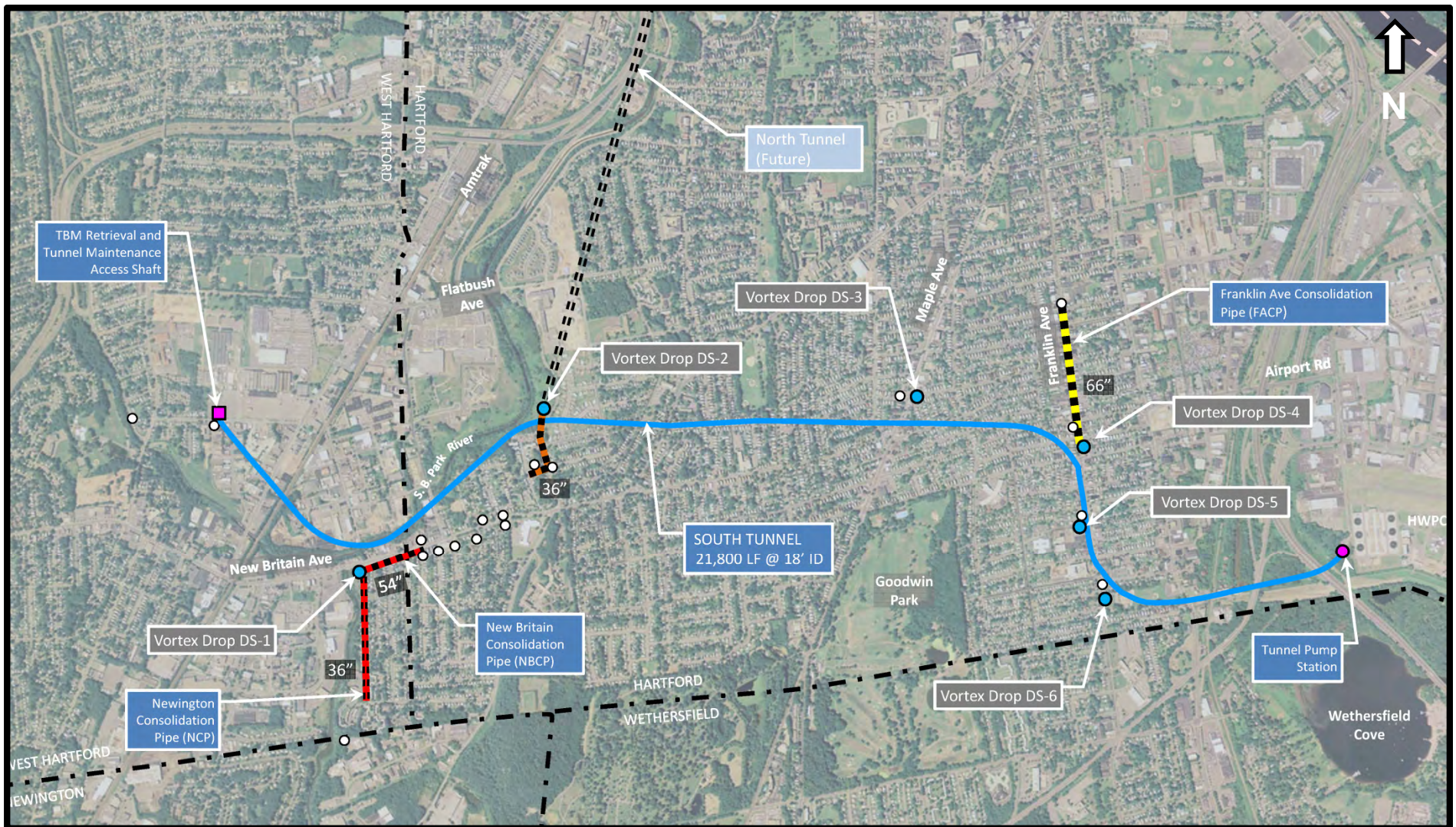
● Existing CSO

# Stakeholder Concerns Drove Alignment Selection

High Impact on Alignment Selection	Medium Impact on Alignment Selection	Low Impact on Alignment Selection
Cost	Perception of Odor at Shafts	Potential for Property Damage
Impacts to Business	Benefit to Community	Reduction in Tax Base ( <i>Permanent Surface Easement</i> )
Impacts to Traffic	Noise/Construction Impacts	Impacts to Property Values
Public Safety	Impact of Construction Vehicles	Schedule
Easements	Duration of Surface Impacts	Increase to Sewer Rates
O&M	Environmental Justice	Maximize Local Contractors
		Long Term Health Perception

# The South Tunnel Project Components:

- 4 miles long (21,800 LF)
- 18 foot internal diameter
- 175 to 250 feet deep
- 6 Intermediate Hydraulic Drop Shafts
- 7,300 LF of Consolidation Conduits
- 50 MGD deep pump station



# Subterranean Easements

- Required for about 250 parcels – no surface or shallow easements at these locations
- MDC will not retain any rights at the surface nor adversely affect the use of any parcel
- Grants MDC the right to construct and operate ~200-foot deep tunnel under each parcel
- Defines depth “envelope” of MDC rights to construct the tunnel



**Play Video**