

Taunton River Crossing

Use of HDD to Limit Environmental and Community Impacts

Gary Munroe (Liberty Utilities) and Jason Gorman, PE (CHA Consulting)



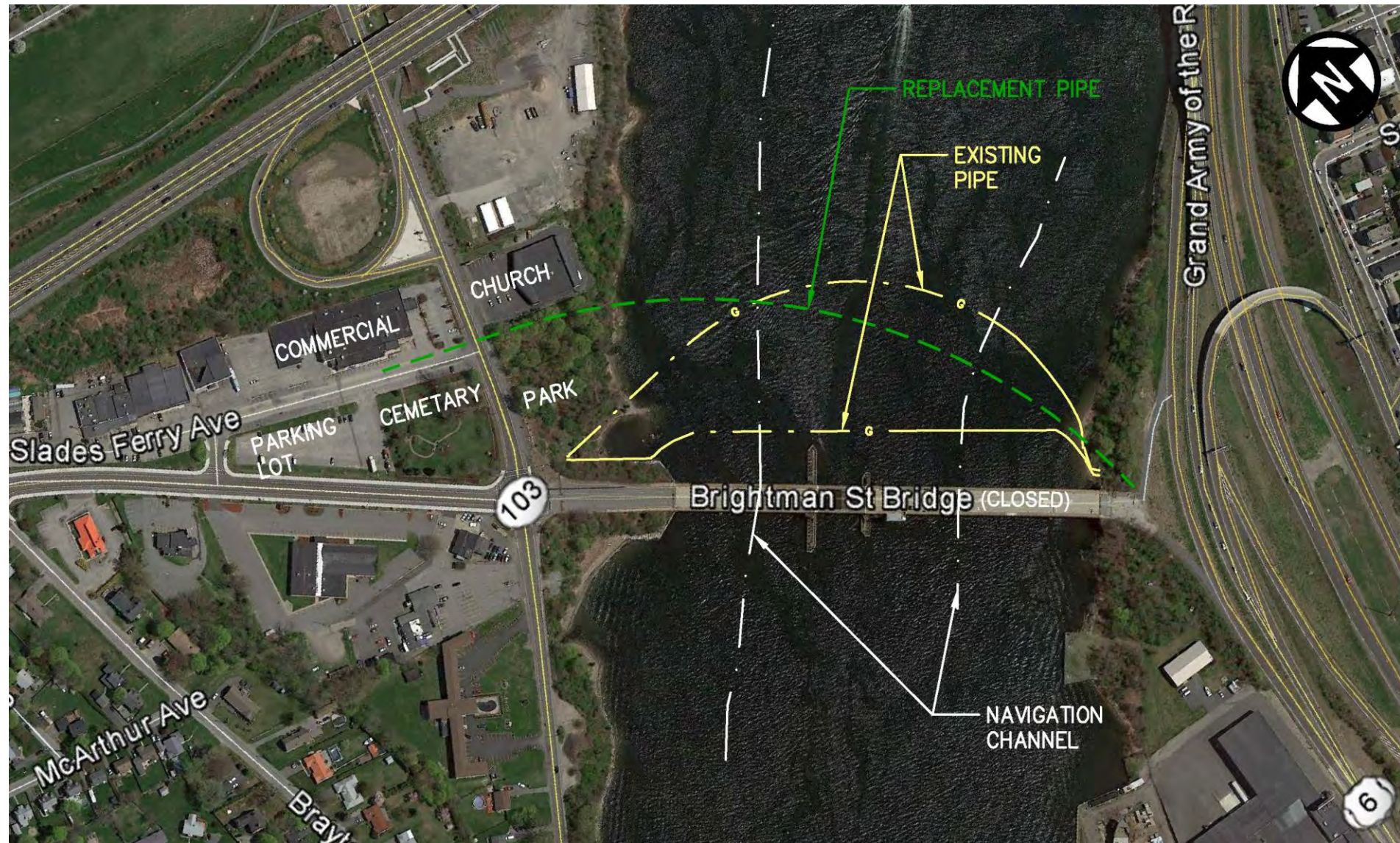
Agenda

- Existing Conditions
- Replacement Design
- Construction
- Permitting
- Questions

Existing Conditions

- NG Pipes for Distribution from Fall River to Somerset
 - 1 – 6 inch steel
 - 1 – 4 inch HDPE inside 6 inch steel
 - 1 - 6 inch abandoned cast-iron
- Existing System
- Land Use
 - Commercial
 - River
 - Highway

Site Plan



Slades Ferry Ave (west looking east)



Fall River Express Way (east looking south)



Replacement Design

- Site Constraints
 - Environmental Resources
 - Community and Infrastructure
- Conceptual Alignment
 - System Tie-in
 - Coated Pipe – API 51 X-52 12 inch diameter, 0.375 inch wall
 - Alignment
 - Subsurface Exploration

Environmental Resources (west)



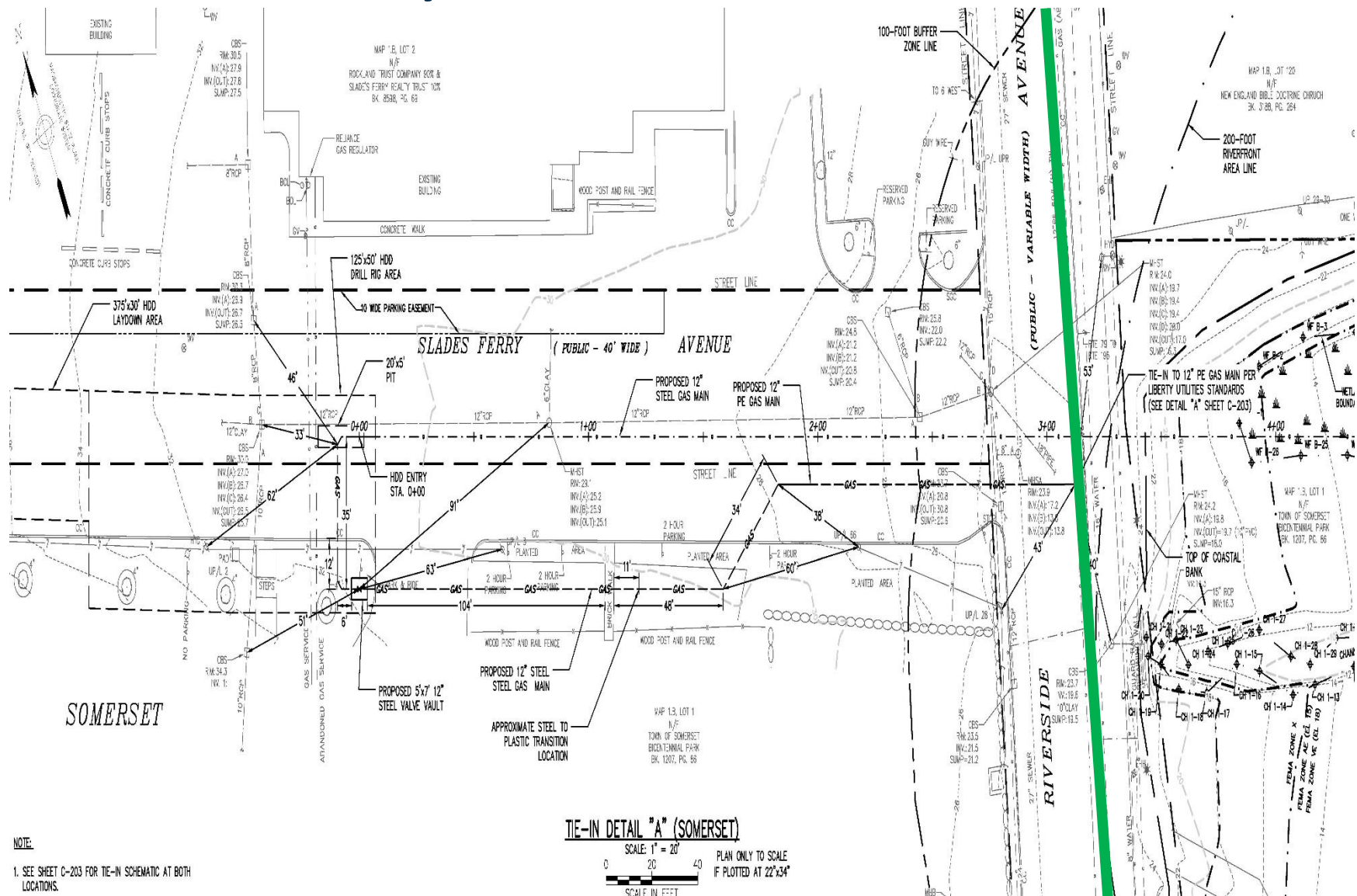
Environmental Resources (east)



Community and Infrastructure



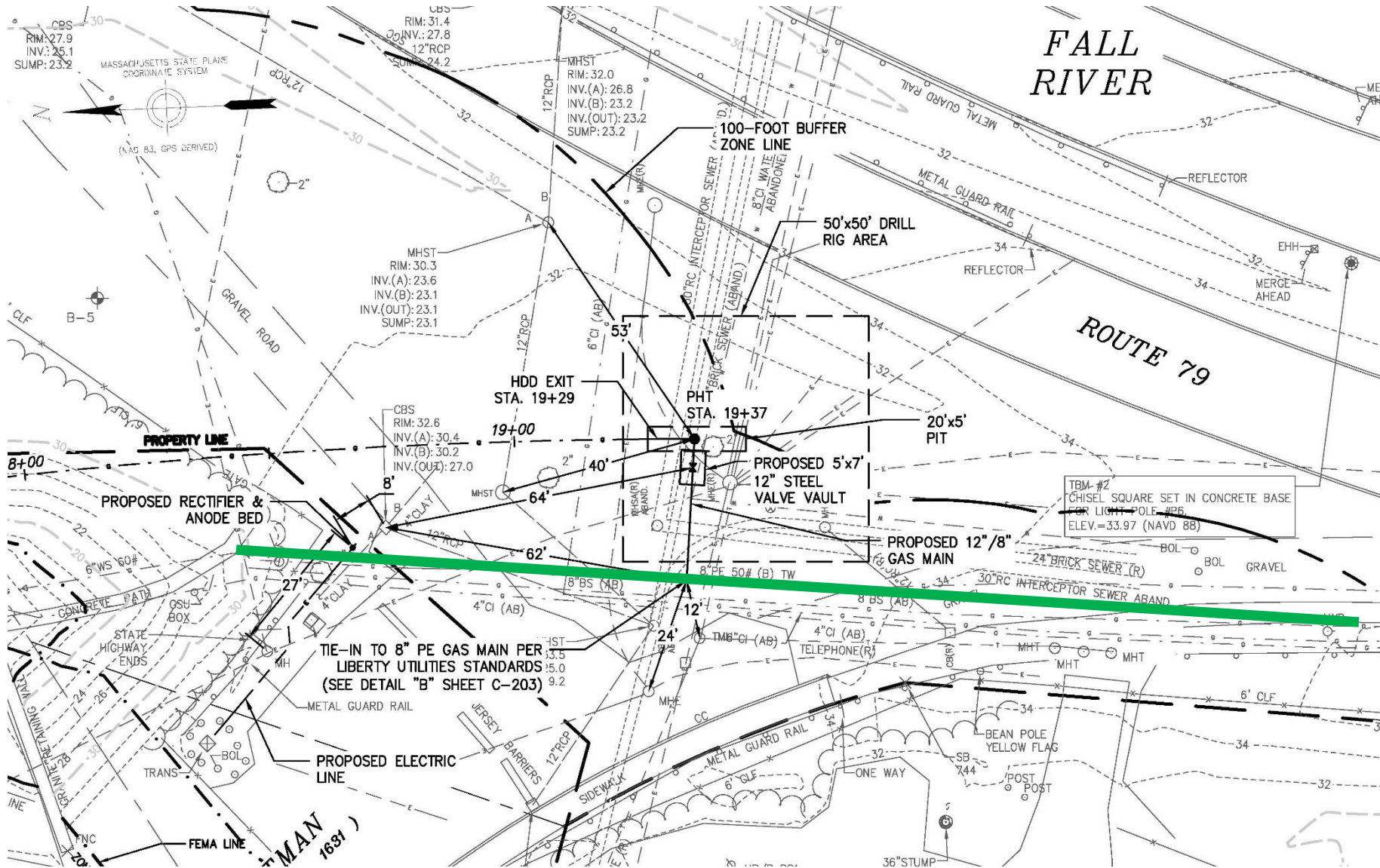
System Tie-In (west)



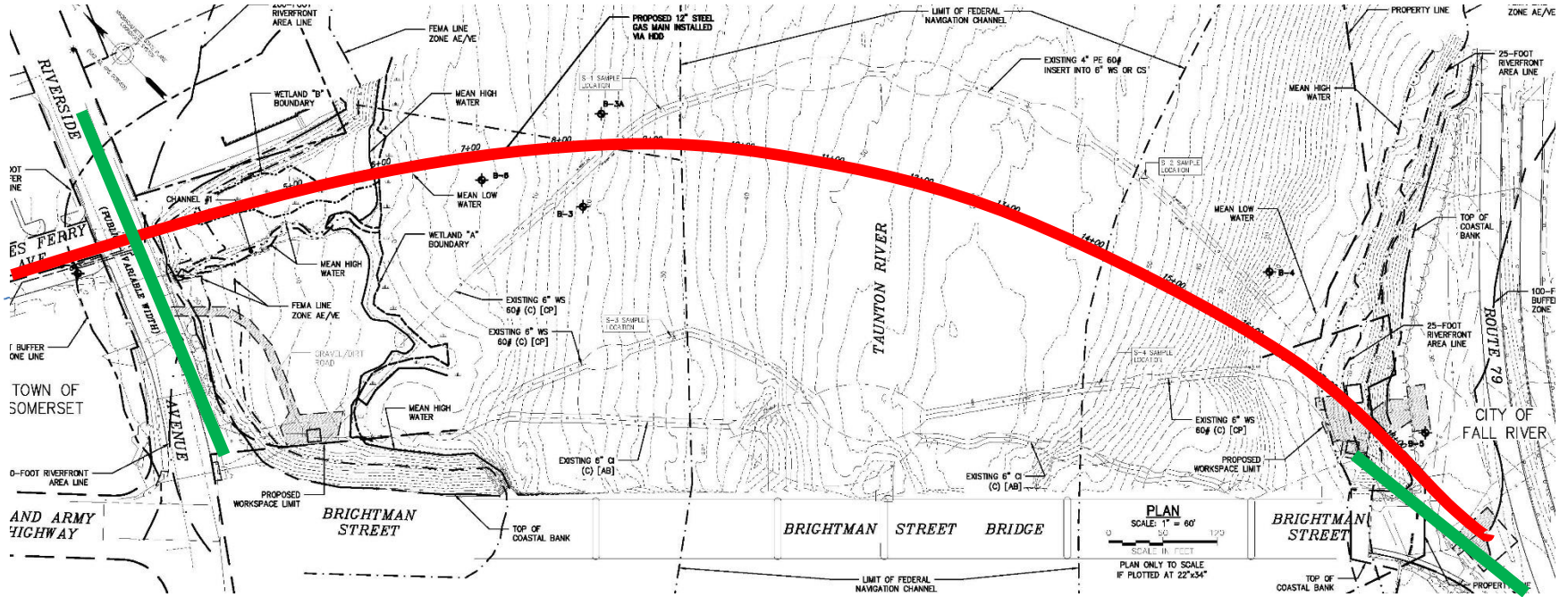
NOTE:

1. SEE SHEET C-203 FOR TIE-IN SCHEMATIC AT BOTH LOCATIONS.

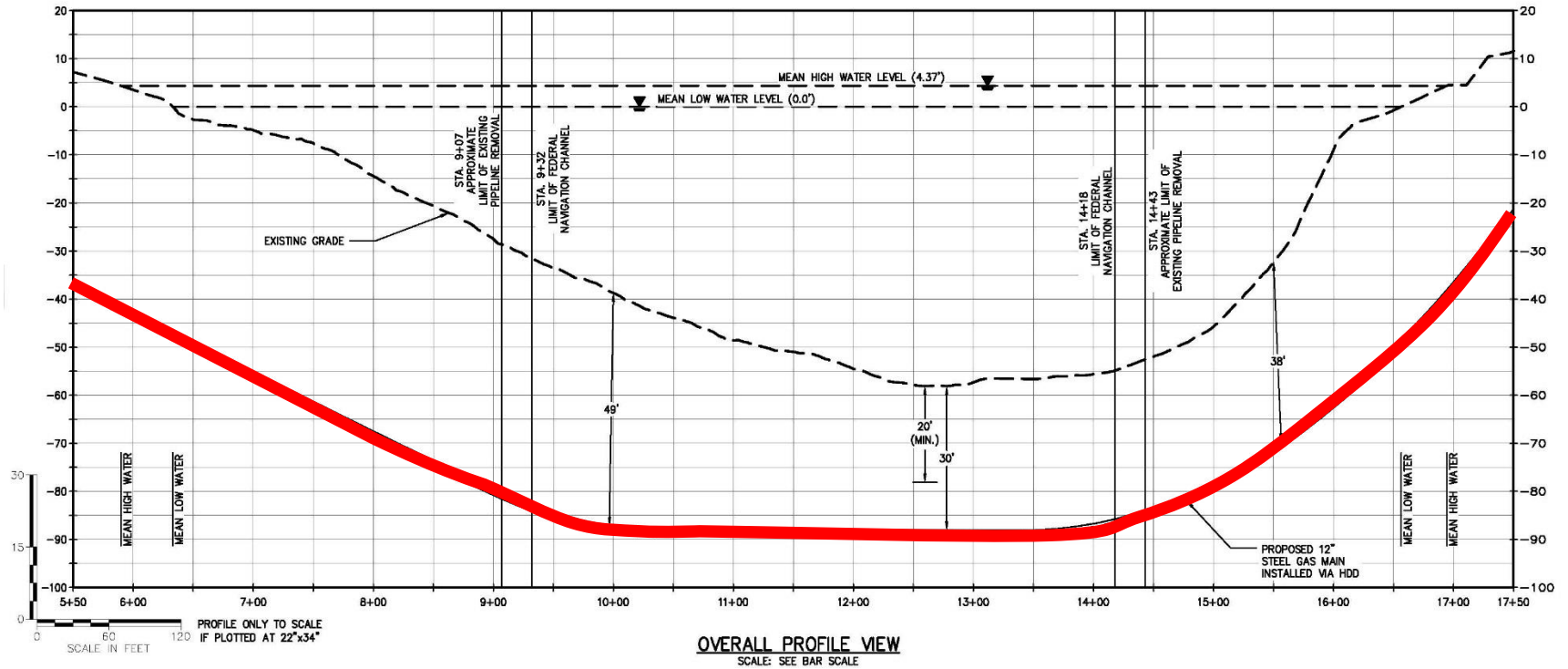
System Tie-In (east)



Alignment (plan)



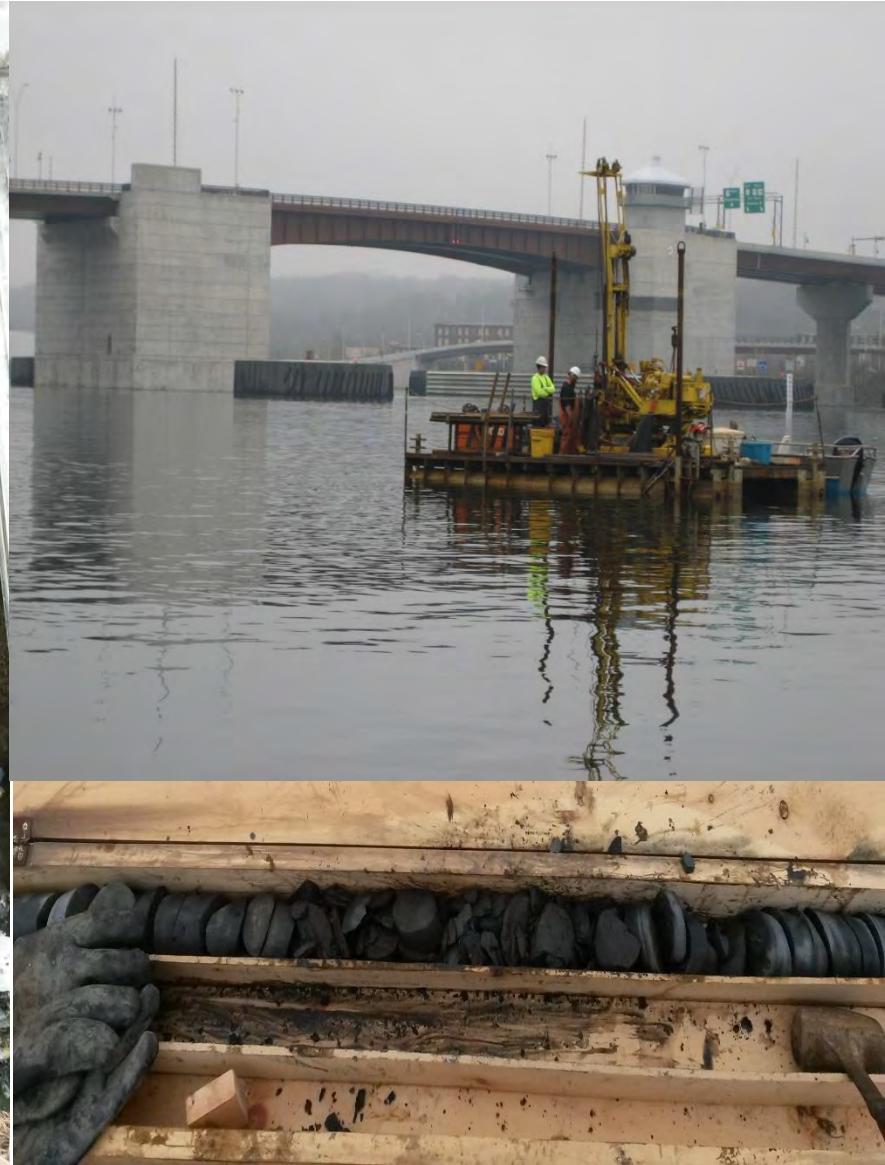
Alignment (profile)



Subsurface Exploration



Subsurface Exploration



Construction

- HDD Work Plan
- Pilot Hole
- Reaming/ Test String
- Pipe Pull-in
- Testing
- Commissioning

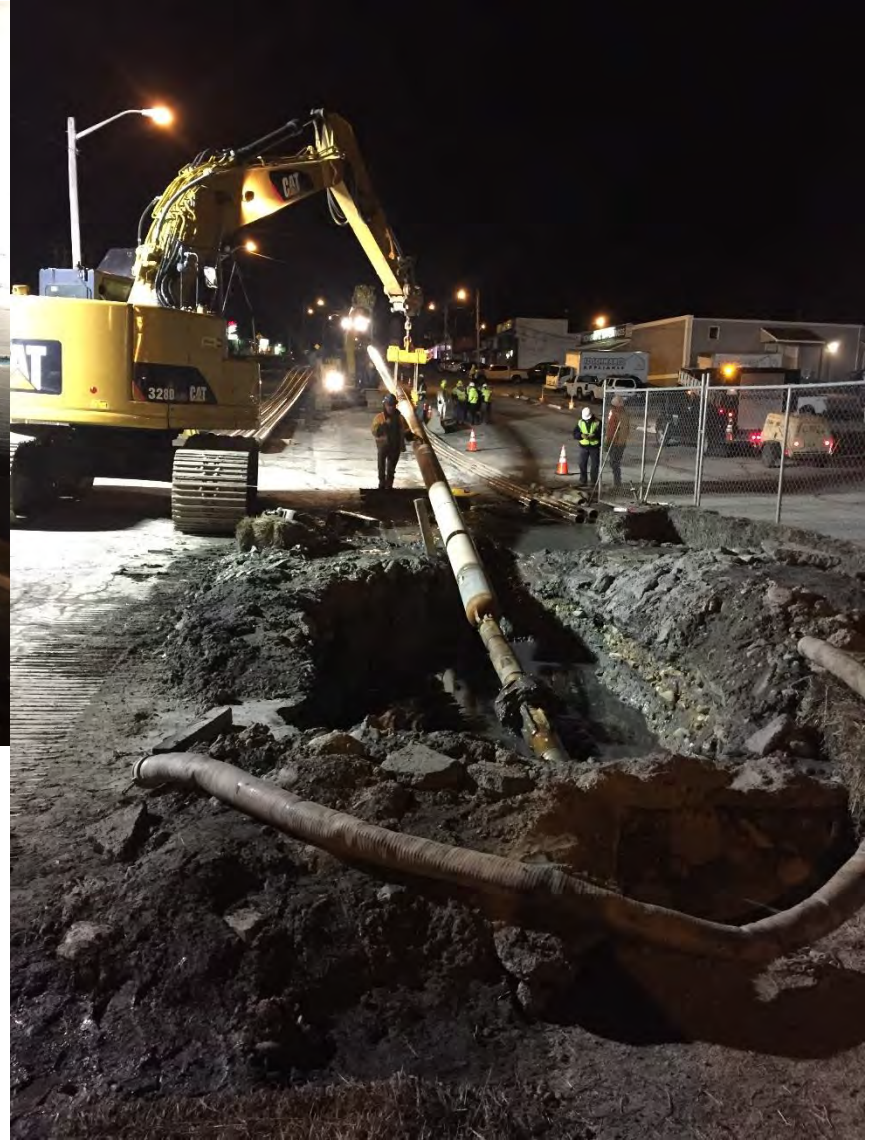
HDD Work Plan



Pilot Hole



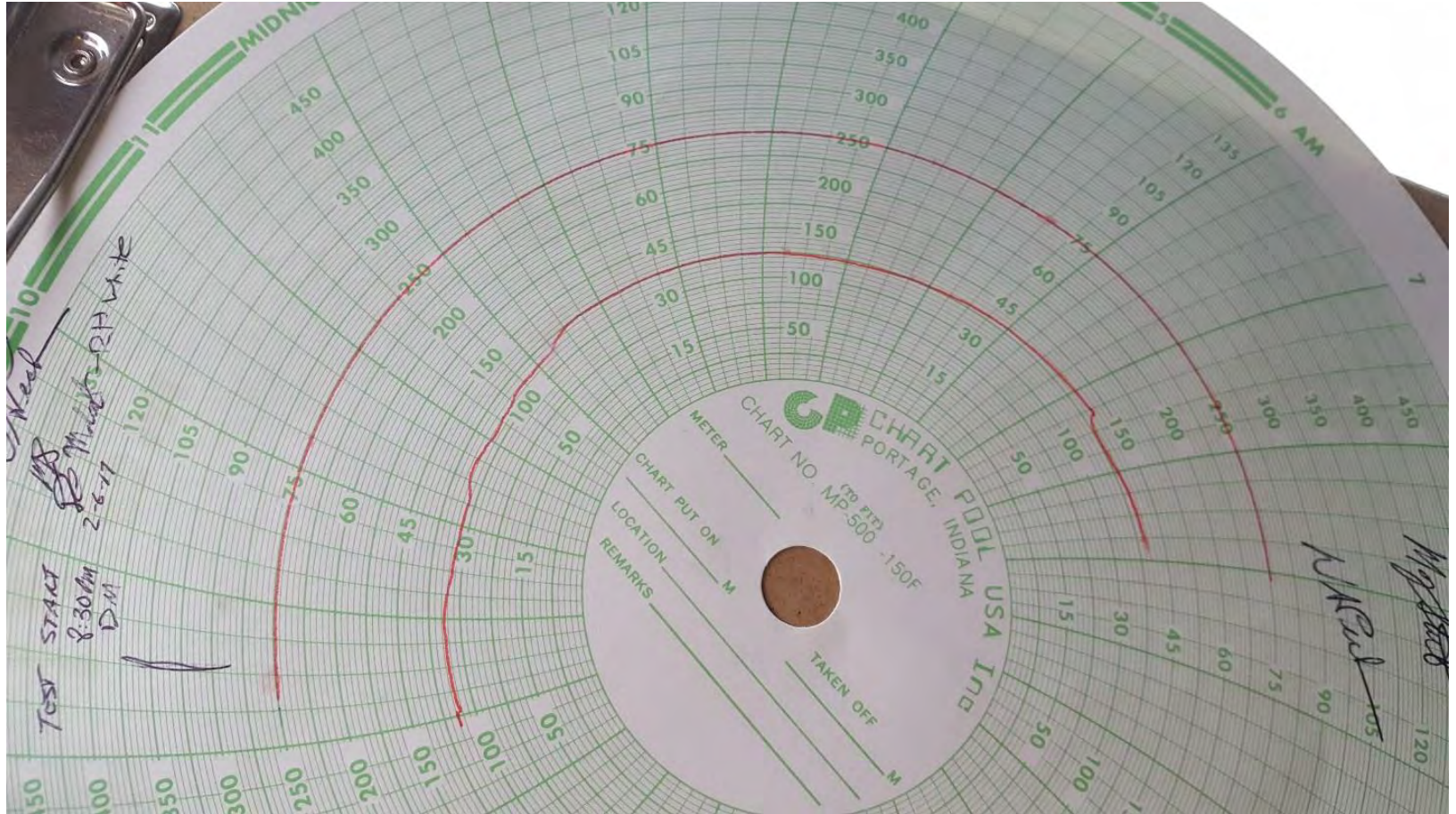
Reaming/ Test String



Pipe Pull-In



Pressure Testing



Commissioning

- Use of Nitrogen Eliminate Need to Purge
- Confirmed Tie-in at Operating Pressure
- Confirmed Integrity of Pipe with Rectifier

Permitting

- USACE Section 404/10
- USACE Section 408
- Mass DEP Chapter 91
- MassDEP Section 401
- Mass Environmental Notification Form
- Mass DOT State Highway Access
- Somerset Conservation Commission
- Fall River Conservation Commission
- Somerset Street Opening
- USFW/ SHPO/SW Underwater Arch/ Tribes/ NPS/ Fisheries

Questions

