

# Planning, People, and Process: Keys to a successful large diameter multi sensor inspection

**NASTT Municipal Outreach Conference**

**Cooperstown, New York**

**November 16<sup>th</sup>, 2017**

**Matt Timberlake – Ted Berry Company Inc.**

**Adam Slifko – CUES Inc.**





# Speakers



**Matt Timberlake**

President Ted Berry Company Inc.



**Adam Slifko**

Business development Manager Pipeline Inspection Partners Corp. a Division of CUES





# Session Outline:

## 1. Project Overview

## 2. Planning

1. Ted Berry
2. CUES

## 3. People

1. Ted Berry
2. CUES

## 4. Process

1. Ted Berry
2. CUES

## 5. Questions



# Project Overview

**Project Owner:** Massachusetts Water Resources Authority (MWRA)

**Consultant:** Hazen and Sawyer

**Contractor:** Ted Berry Company Inc.

**MSI Equipment Supplier:** CUES Inc. (Pipeline Inspection Partners Corp.)

**Safety and Rescue Team:** Life Safety Specialists

Conduct a comprehensive inspection and evaluation of the North Metropolitan sewer in Winthrop Mass.

1. 15,023lf of 108" brick sewer
  1. Manned entry
    1. Visual inspection
    2. Sounding
    3. Collect core samples
  2. Core sampling
  3. 3D MSI

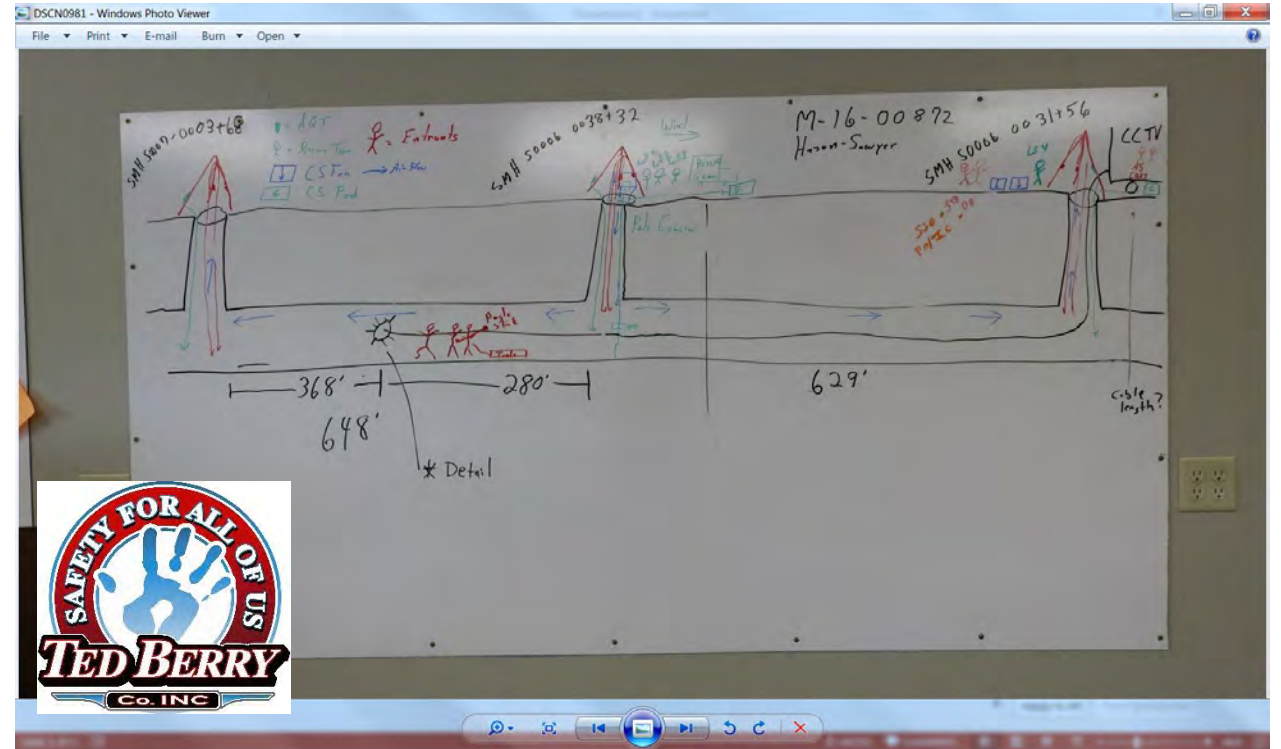


**Why we are really here?**  
**Help prolong the life of the buried assets entrusted to us.**



# Planning (Ted Berry Company)

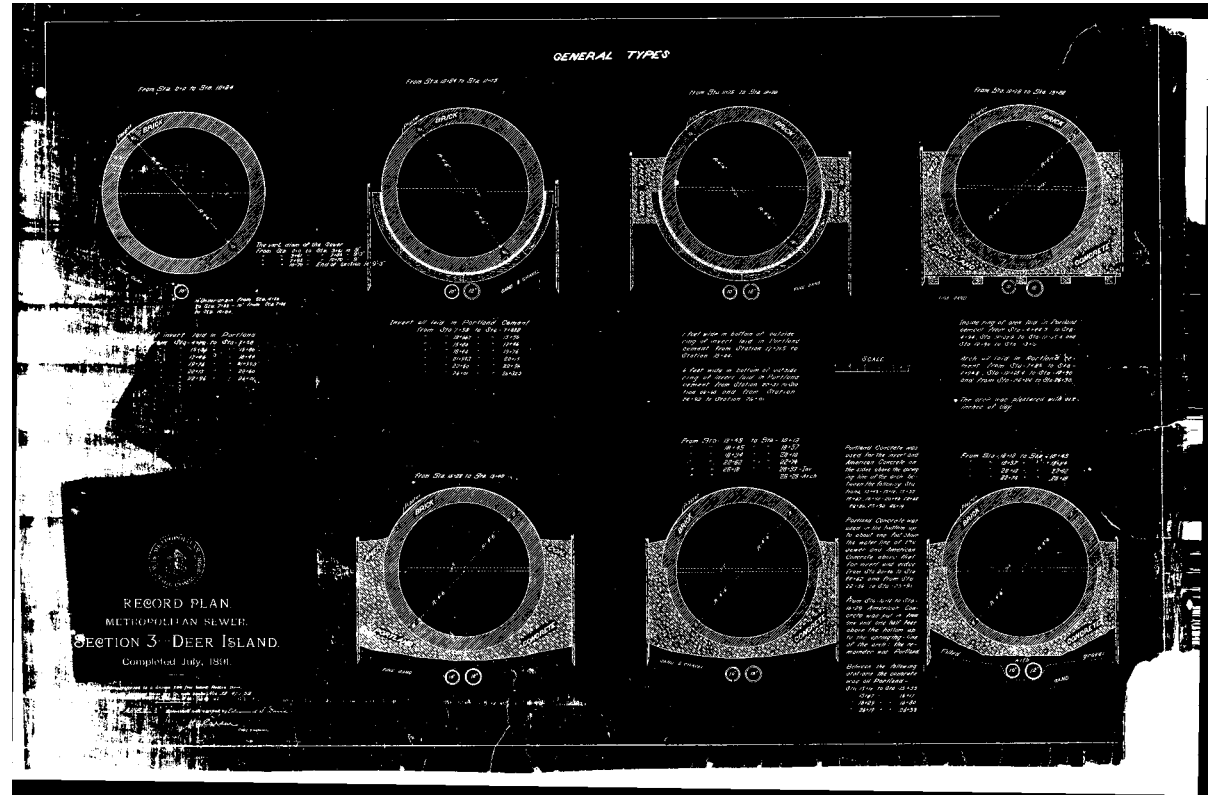
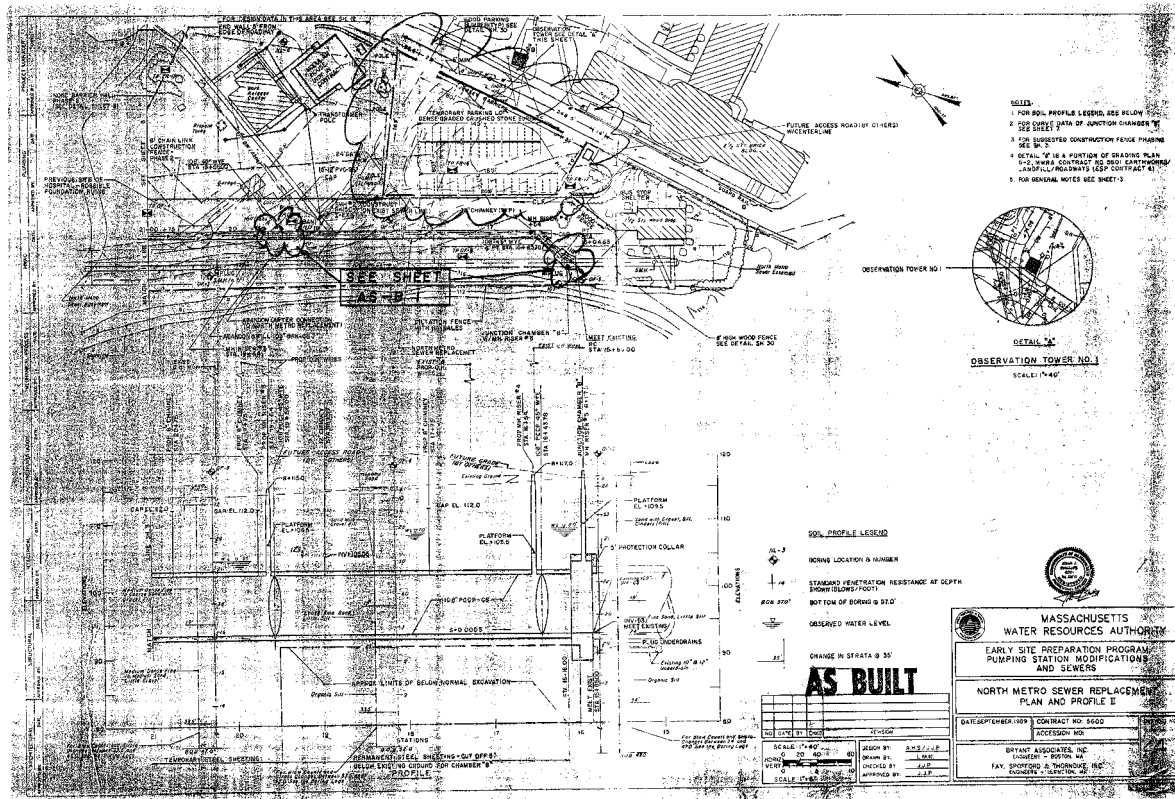
1. Understand the scope of work
2. Understand the stakeholders
3. Development of comprehensive HASP (health and safety plan)
4. Technology selection
5. Assign project team
6. Development of the Field Work Plan (FWP)
7. Crew preparedness



**Internal collaborative approach to developing comprehensive HASP for project. NOT a generic off the shelf approach.**

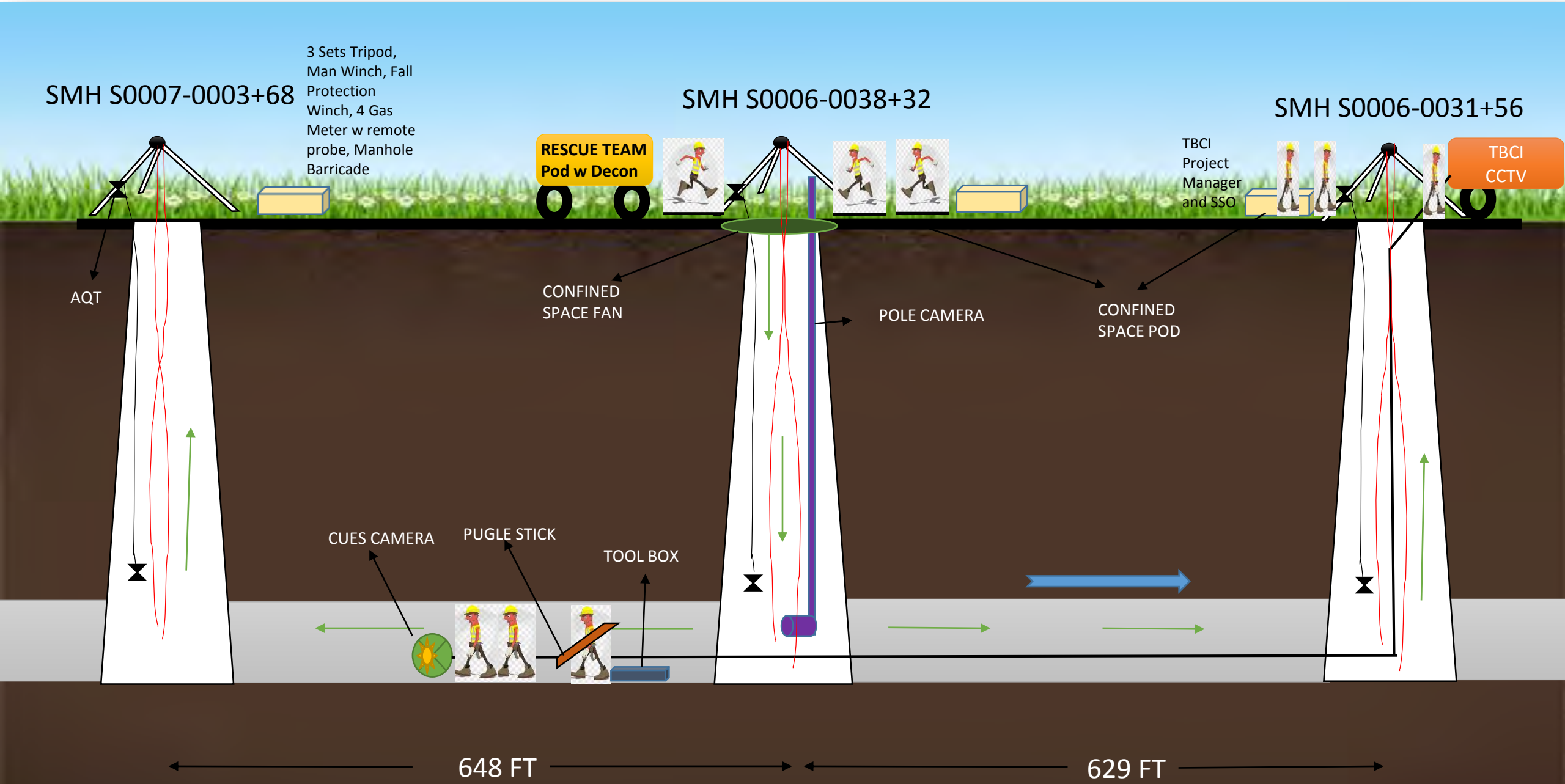


# Planning (Ted Berry Company)(CUES)



Plans review.

# Planning (Ted Berry Company)(CUES)



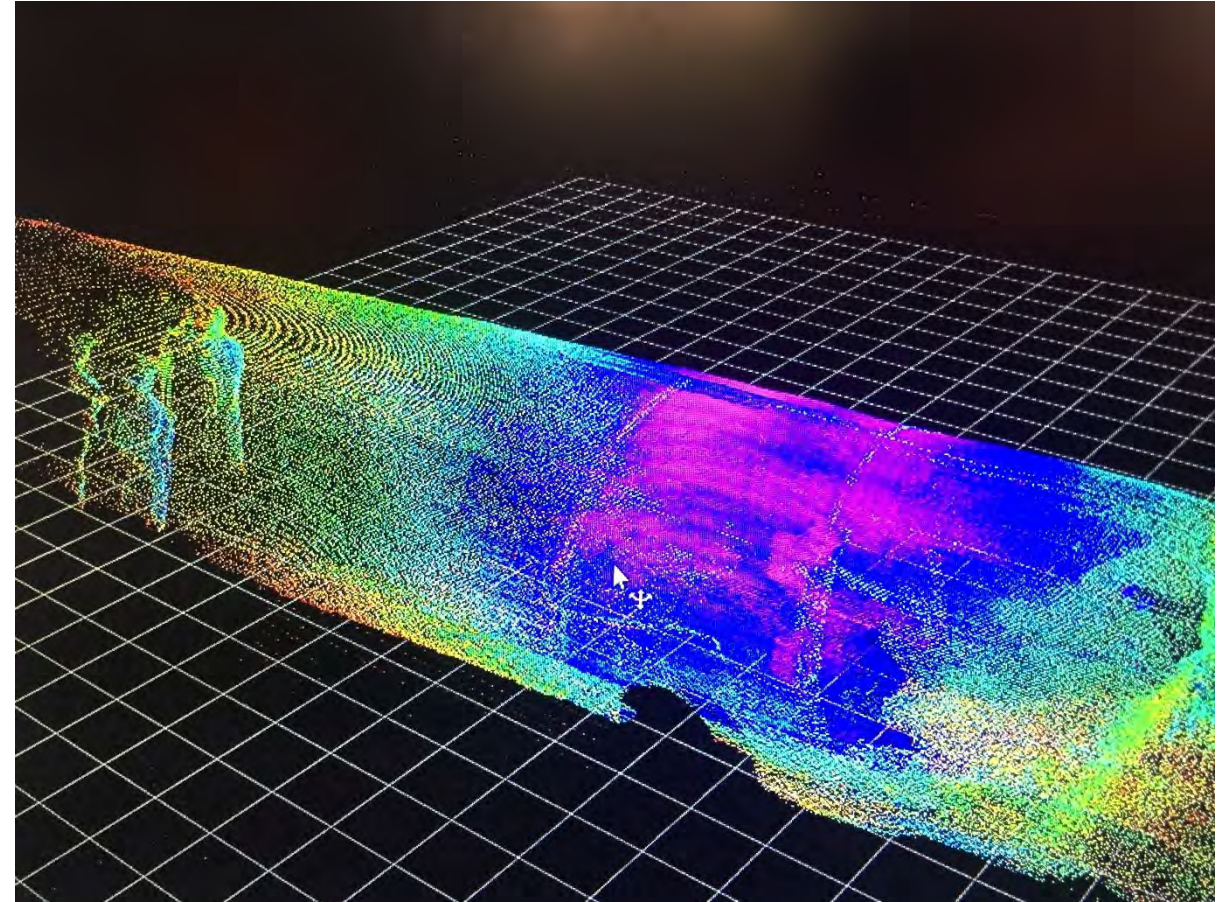


# Planning (CUES)

## Technology Selection

CUES SolidFX Multi Sensor Inspection (MSI)

- A. Digital Universal Camera (DUC)
- B. LiDAR
- C. Digital Sonar
- D. Use skid transport system in conjunction with manned entry that was required



# People (Ted Berry Company Inc.)



*“Your attitude will determine your altitude”*

Essential to have a total team effort.

Division of responsibilities (production and safety hand in hand).

Highly competent team leaders.



# People



“People are more important than things”  
Randy Pausch

# People (CUES Inc.)

- Collaboration between CUES and Ted Berry Team





# Process (Ted Berry Company Inc.)

- Little things are big things
- Mobil Porta-Potty
- Pugil stick
- Two way communications systems
- Entry gear
- Air quality best practices
- Core sampling approach
- LOTO process (Carusso P.S.)
- Decon process
- Wet weather plan



- Work to be performed at night
- Start of every shift a planning and safety meeting, lessons learned, open and honest communication.



# Process (Ted Berry Company Inc.)

## Entry and Safety

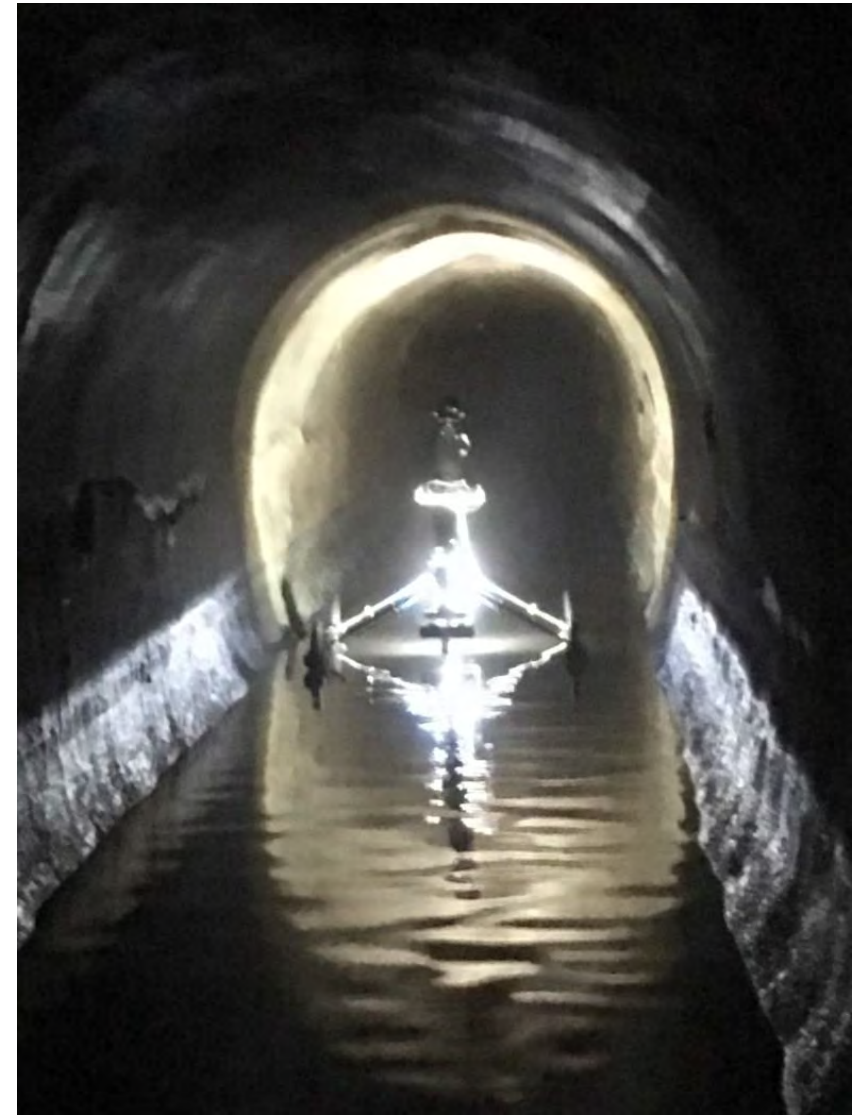


## Inspection and Production



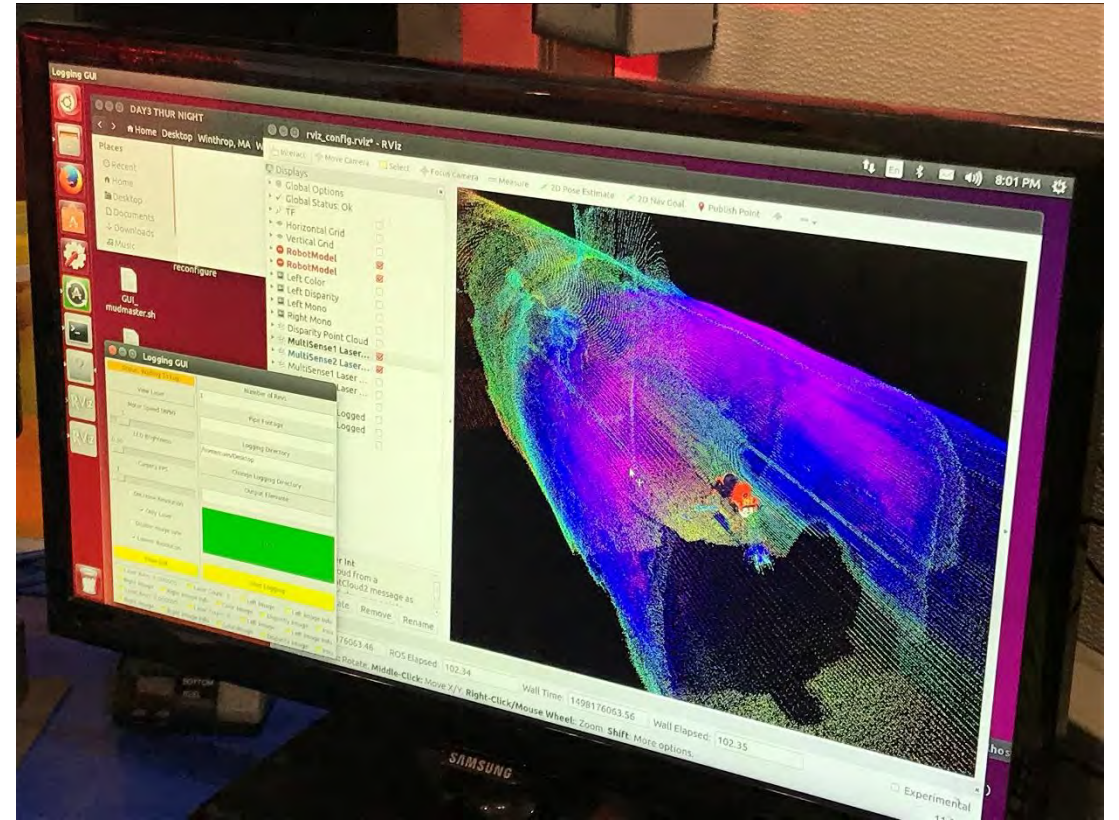


# Process (CUES)





# Process (CUES)





# Feedback

*“This was an out of the ordinary project and a tough job. The health and safety plan, sounding techniques, and multi-sensor approach made it a success.”*

Kevin Rafferty Hazen and Sawyer





# Questions

**Matt Timberlake**

[matt@tedberrycompany.com](mailto:matt@tedberrycompany.com)

@NoDigMaine

**Adam Slifko**

[aslifko@cuesinc.com](mailto:aslifko@cuesinc.com)

